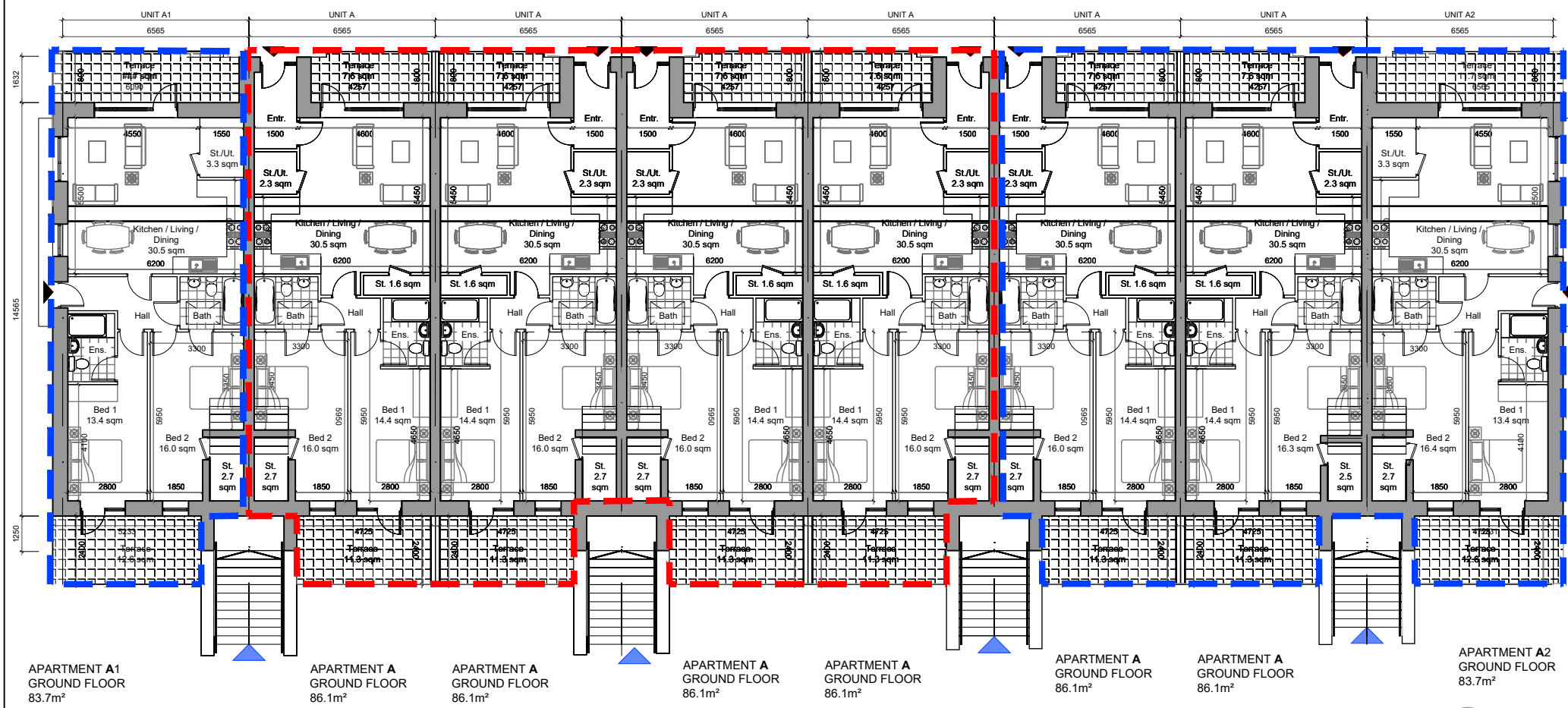


**SCHEDULE OF ACCOMODATION PART V - SOCIAL**

TOTAL No. OF PART V UNITS PROPOSED IN DUPLEX BLOCK B - 7 UNITS  
 UNIT - TYPE 'A' - 2 BED - ( 86.1 Sq.m) - 4 No.  
 UNIT - TYPE 'B' - 3 BED - ( 122.2 Sq.m) - 3 No.

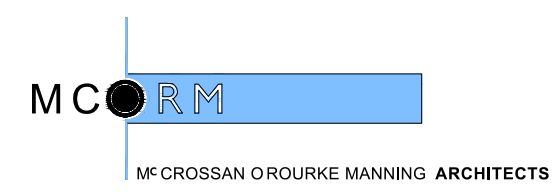
**SCHEDULE OF ACCOMODATION PART V - AFFORDABLE**

TOTAL No. OF PART V UNITS PROPOSED IN DUPLEX BLOCK B - 9 UNITS  
 UNIT - TYPE 'A' - 2 BED - ( 86.1 Sq.m) - 2 No.  
 UNIT - TYPE 'A1' - 2 BED - ( 83.7 Sq.m) - 1 No.  
 UNIT - TYPE 'A2' - 2 BED - ( 83.7 Sq.m) - 1 No.  
 UNIT - TYPE 'B' - 3 BED - ( 122.2 Sq.m) - 3 No.  
 UNIT - TYPE 'B1' - 3 BED - ( 123.2 Sq.m) - 1 No.  
 UNIT - TYPE 'B2' - 3 BED - ( 122.2 Sq.m) - 1 No.



**GROUND FLOOR PLAN - 1:200@A3**

**NOTE:**  
 DO NOT SCALE FROM DRAWINGS. WORK TO FIGURED DIMENSIONS ONLY. ARCHITECT TO BE NOTIFIED OF ALL DISCREPANCIES.



PROJECT TITLE: Residential development @ Boherboy Lands	DATE: June '21	DRAWN BY: SM
DRAWING TITLE: Part V Duplex Block B - Ground Floor Plan	SCALE: 1:200@A3	REVISION:
Albert Place West, Harcourt Lane, Dublin 2, Ireland. Tel: 01-4788700 Fax: 01-4788711 E-Mail: arch@mcorm.com	JOB NO: 20002	DRAWING NO: PV01